

# TECHNICAL REPORT



**Name of Ship:** SEVEN CHAMPION

**IMO No.:** 9377377

**Type of Ship:** Accommodation and Pipelay Barge

## Statement

The Technical Report is made on the data and documents provided by the seller (the “Seller”) for reference only and do not constitute any guarantee, representation or assurance for the condition of the Vessel as at the time of sale and delivery of the Vessel. The Vessel shall be delivered and taken on an "as is where is" basis. Any discrepancy between the actual condition of the Vessel, the actual condition as at the time of sale and delivery of the Vessel shall prevail. Our company and the Seller of the Vessel will not be liable for any defects or any issue whatsoever arising in relation to the Vessel and shall not be liable in relation to any matter relating to the Vessel whatsoever.

# Technical Report

Entrusted by the customer, our company organizes the surveyor to issue the technical report of "SEVEN CHAMPION" according to the ship data and material provided by the customer. The report reflects the ship's technical status at the time of inspection and is for reference only. In case of any discrepancy, the current situation of the ship shall prevail, and our company shall not assume legal liability.

## 二、Principal Particulars

Type of Ship	Accommodation and Pipelay Barge	IMO	9377377
LOA	142.00m	Flag	Singapore
LPP	136.32m	Class	LR
MLB	40.00m	Trading Area	Ocean-going
MLD	10.00m	Built place	Indonesia
Summer Draft	6.52m	Shipbuilder	Nanindah Mutiara Shipyard
GRT	25112	Date of Keel Laying	January 5th, 2006
Deadweight	16155t	Date of Delivery	August 2nd, 2007
Deck Area	4000 m <sup>2</sup>	Positioning System	DP2
Deck Strength	17 t/m <sup>2</sup>	Primary Crane	1×2200t
Deck Load Capacity	6464t	Secondary Crane	2×68t

The above information and data is provided by the customer and is for reference only.

### 三、Ship Introduction

#### ● Overview

The ship was built as a non self propelled accommodation and pipelay barge with ocean-going, equipped with functions such as lifting, pipe laying, installation, and living support. The primary crane is installed at the stern area, with maximum lifting capacity of 2200 tons. There are also 2 secondary cranes with maximum lifting capacity of 68 tons each. The maximum capacity for staff is 470 persons.

Class Notation:

✕ 100A1 ACCOMODATION BARGE/PIPE LAYING BARGE, HELICOPTER LANDING AREA, DECK STRENGTHENED FOR 17 TONNES PER SQUARE METRE UNIFORM DISTRIBUTED LOADING, LA, \*IWS.

Machinery Notation:

✕ LMC, DP(AA)

Statutory Survey:

Annual Survey: August 2nd, 2025;

Dock Survey: July 9th, 2025;

Special Survey: August 1st, 2027.

#### ● Main Equipment

##### 1. Engine Machinery

Machinery	NO.	Model	Parameter	Manufacturer
Main Generator	6	DIG 156 M/10W	3685kW	ROLLS-ROYCE
Primer Mover of Main Generator	6	B32:40L8A	3840kW×720 RPM	Bergen
Auxiliary generator	2	DSG 99K1-8W	1260kW	ROLLS-ROYCE
Primer Mover of Auxiliary Generator	2	KRMB-6	1325kW×900 RPM	Bergen
Emergency	1	3408	350kW×440V	CATERPILLAR

Generator				
Primary Crane	1	--	SWL 2200t	Huisman
Secondary Crane	2	35000 HD	SWL 68t	AmClyde
Domestic sewage treatment plant	2		20.83m <sup>3</sup> /day	HAMWORTHY

## 2. DP System

Machinery	NO.	Model	Parameter	Manufacturer
DP 2	-	A-Series Duplex	Notation: DP (AA)	Converteam
Taut Wire Positioning System	2	MK-15B Light Wt Taut Wire		Bandak AS
Wirerope	4	Super	700m×4.9mm + 0.1 mm Minimum breaking strength: 18.1kN	Diepa
DGPS	2	DSM 232 LRS 3510		Trimble Fugro
Laser	1	CY Scan	-	-
Acoustic System	1	Ranger 2 Survey USBL		Sonardyne
Radar	1	Radascan		

## 3. Pipe Laying Equipment

Machinery	NO.	Model	Parameter	Manufacturer
Pipe laying system	-	S-LAY	Pipe OD: 6-56 inch	-
Pipeline tensioning system	2	SE100LCS25AC	100t, Horizontal tensioner	SAS

Welding workstation	5	-	Single connector	SAS
NDT workstation	1	-	-	-
Painting workstation	2	-	-	-
AR winch	1	ARW220E25AC	SWL 220t 1200m×88mm(φ)	SAS
Pipeline hanger system	5	HDLD50FB	50t	SAS
Rotating drum (SR)	2	-	-	SAS
Alignment Tool (LUT)	5	-	-	SAS
Longitudinal Conveyor (LC)	34	-	-	SAS
Cross conveyer 1 (TV)	8	-	20t	SAS
Cross conveyer 2 (TV)	3	-	35t	SAS
Fixed pipe support (FPS)	14	-	-	SAS
Stern pipeline track (SPT)	2	-	-	SAS
Pipe recline support (PRS)	5	-	-	SAS
Lift roller support (BS)	5	-	-	SAS



#### 4. Parking Apron

Name	Dimension	Note
Helipad	27.5m×22.2m	CAP437 Certified, Sikorsky S-92

#### 5. Accommodation Room

Name	Quantity	Note
Bed	470	
Room	140	Single room×10 Double room×30 4-person room×100

#### 6. Fresh Water Tank

No.	Location	Capacity (m <sup>3</sup> )
Fresh water tank (P)	FR.33-FR.41	1124.4
Fresh water tank (S)	FR.33-FR.41	1135.8
Total		2260.2

#### 7. Fresh Water Cooling Tank

No.	Location	Capacity (m <sup>3</sup> )
Fresh water cooling tank (P)	FR.57-FR.64	260.2
Fresh water cooling tank (S)	FR.57-FR.64	260.2
Total		520.4

## 8. Ballast Water Tank

No.	Location	Capacity (m <sup>3</sup> )
Fore peak tank	FR.74-FR.78	1087.8
1 # BWT (P)	FR.48-FR.57	835.1
1 # BWT (S)	FR.48-FR.57	830.2
2 # BWT (P)	FR.41-FR.48	993.8
2 # BWT (S)	FR.41-FR.48	993.8
3 # BWT (P)	FR.26-FR.33	997
3 # BWT (S)	FR.26-FR.33	997
4 # BWT (P)	FR.17-FR.26	1271.1
4 # BWT (S)	FR.17-FR.26	1264.8
5 # BWT (P)	FR.10-FR.17	1168.314
5 # BWT (S)	FR.10-FR.17	1168.314
Total		11607.2

## 9. Drilling Water/Industrial Water Tank

No.	Location	Capacity (m <sup>3</sup> )
Drilling water/industrial water tank (P)	FR.17-FR.26	351.1
Drilling water/industrial water tank (S)	FR.17-FR.26	355.7
Total		706.8



### 10. Fuel Tank

No.	Location	Capacity (m <sup>3</sup> )
1 # Fuel Tank (P)	FR.58-FR.71	507.5
1 # Fuel Tank (S)	FR.58-FR.71	507.5
2 # Fuel Tank (P)	FR.44-FR.57	515.0
2 # Fuel Tank (S)	FR.44-FR.57	472.5
3 # Fuel Tank (P)	FR.33-FR.41	318.2
3 # Fuel Tank (S)	FR.33-FR.41	318.2
4 # Fuel Tank (P)	FR.26-FR.33	281.1
4 # Fuel Tank (S)	FR.26-FR.33	273.1
Fuel Oil Daily Tank (P)	FR.69-FR.71	58.7
Fuel Oil Daily Tank (S)	FR.69-FR.71	58.7
Total		3310.5

### 11. Hydraulic Oil/Lubricating Oil tank

No.	Location	Capacity (m <sup>3</sup> )
1 # Hydraulic oil tank (P)	FR.70-FR.71	15.5
2 # Hydraulic oil tank (P)	FR.69-FR.70	15.4
Lubricating oil tank	FR.69-FR.71	53.5

## 12. Bilge Water/Domestic Sewage Tank

No.	Location	Capacity (m <sup>3</sup> )
Sludge storage tank (S)	FR.55-FR.57	42.7
Domestic sewage tank (midship)	FR.41-FR.44	123.1
Slop tank (P)	FR.41-FR.44	59.2
Bilge water tank (S)	FR.41-FR.44	59.2

## 13. Void Space

No.	Location	Capacity (m <sup>3</sup> )
Void space of double bottom tank (P)	FR.7-FR.17	565.1
Void space of double bottom tank (S)	FR.7-FR.17	565.1
1 # Void space (P)	FR.4-FR.7	56.6
1 # Void space (S)	FR.4-FR.7	56.6
2 # Void space (P)	FR.1-FR.7	648.7
2 # Void space (S)	FR.1-FR.7	648.7
Void space of rigging (midship)	FR.0-FR.4	156.1

#### 四、Ship Certificate

Certificates Description	Issue Date	Expiry Date
Certificate of Registry	November 20th, 2019	
Classification Certificate		August 1st, 2027
International Tonnage Certificate	November 16th, 2017	
International Load Line Certificate		August 1st, 2027
MODU Safety Equipment Certificate		August 1st, 2027
International Oil Pollution Prevention Certificate		August 1st, 2027
International Sewage Prevention of Pollution Certificate		August 1st, 2027
International Air Pollution Prevention Certificate		August 1st, 2027
Ballast Water Management Plan	July 16th, 2022	
Safety Radio Certificate		June 30th, 2027
Safety Management Certificate		May 14th, 2027
Certificate of Fitness for the Carriage of Dangerous Goods		August 1st, 2027
International Ship Security Certificate		May 14th, 2027
Continuous Synopsis Record	November 16th, 2017	
Helicopter Deck Landing Certificate		January 16th, 2025

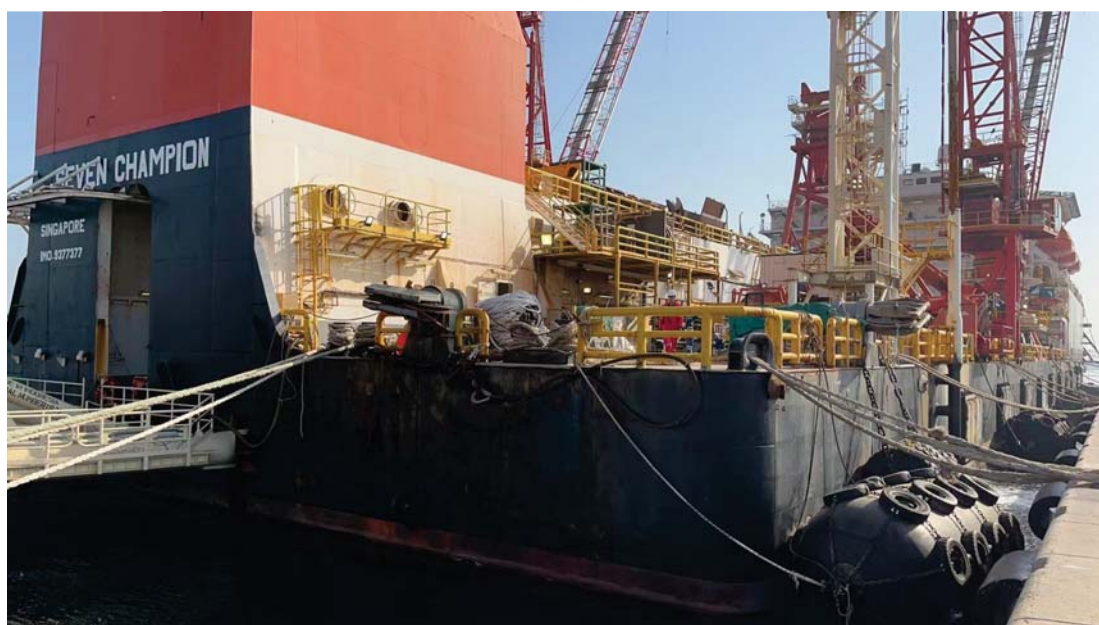
Note: All the above certificates have not expired.

## 五、 Technical Status

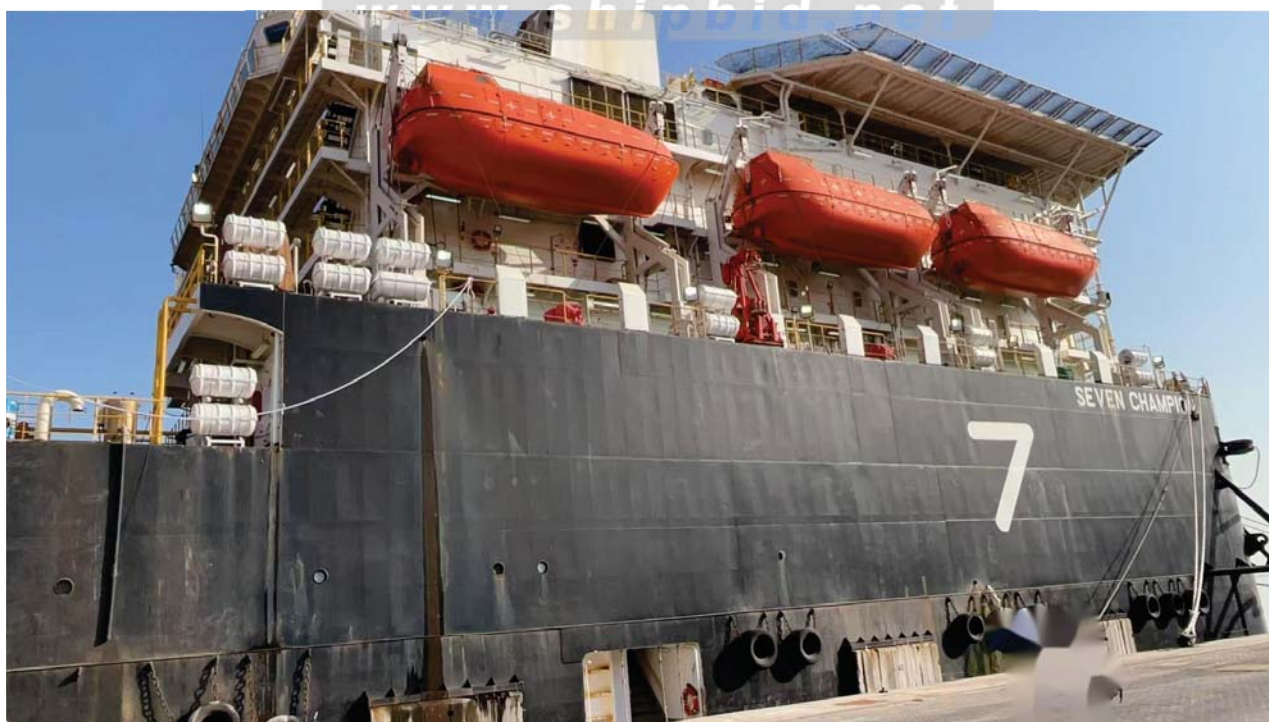
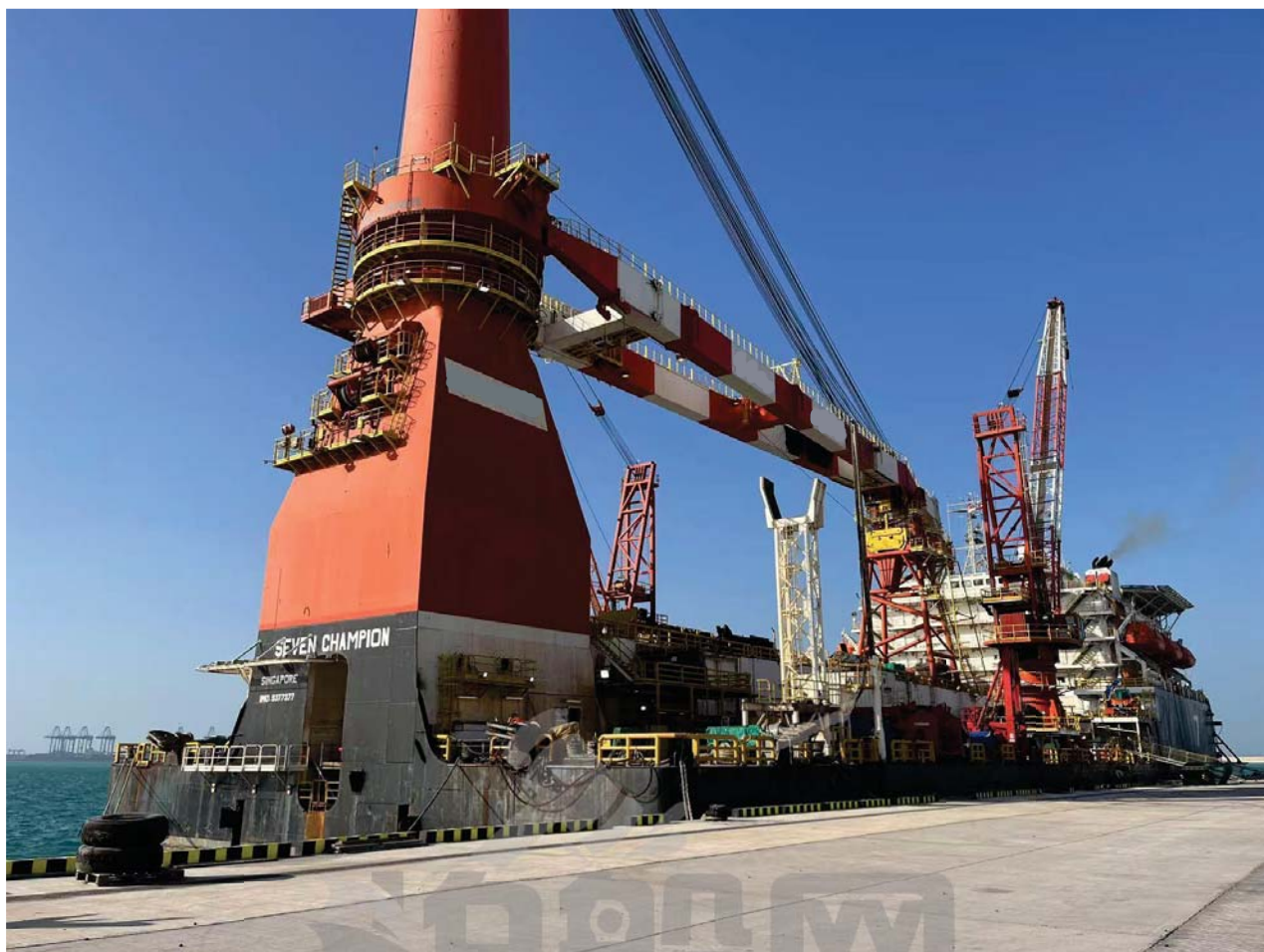
### 1. Hull



www.shipbid.net

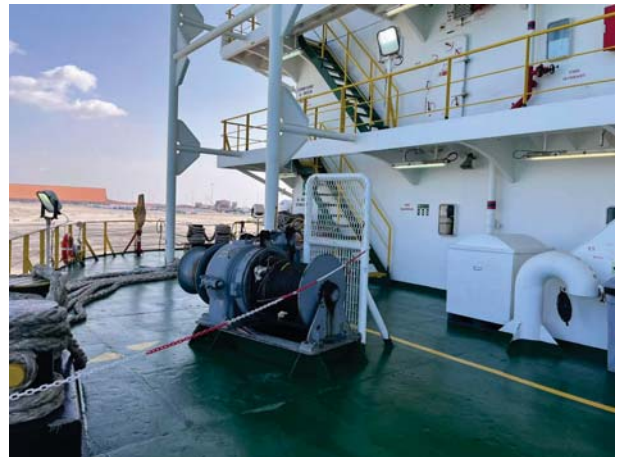




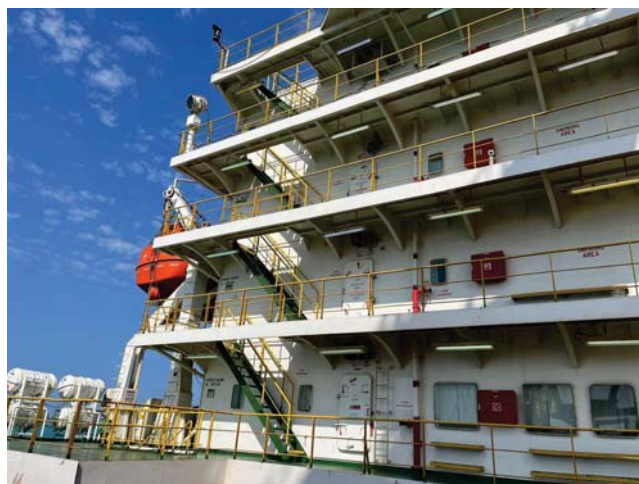




## 2. Deck and Machinery



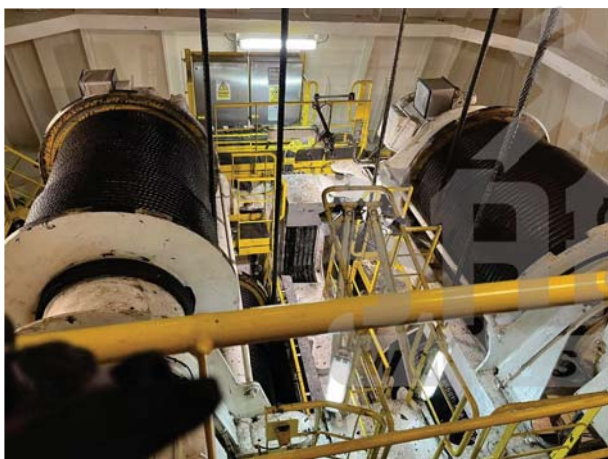






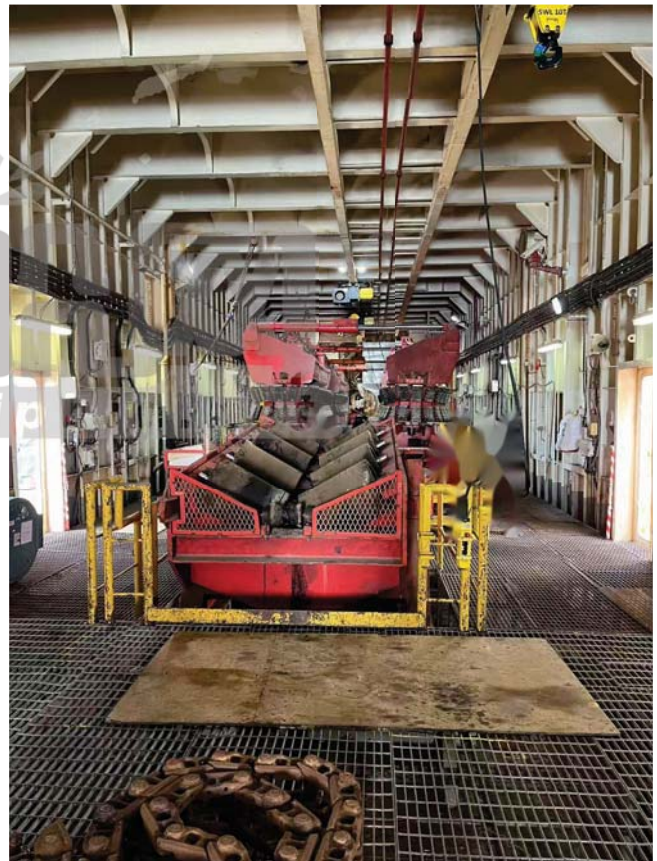
### 3. Crane



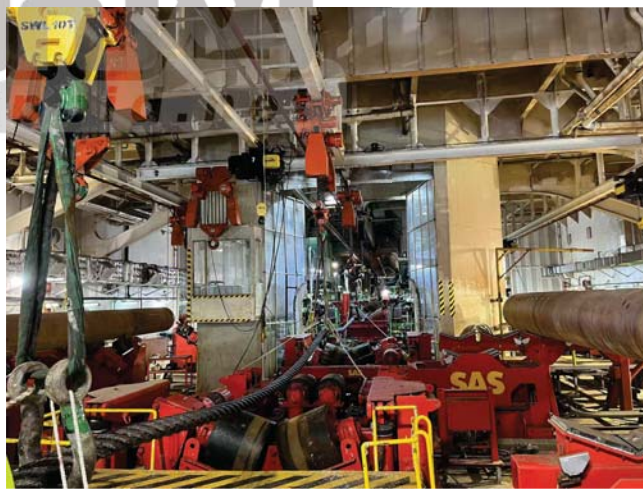
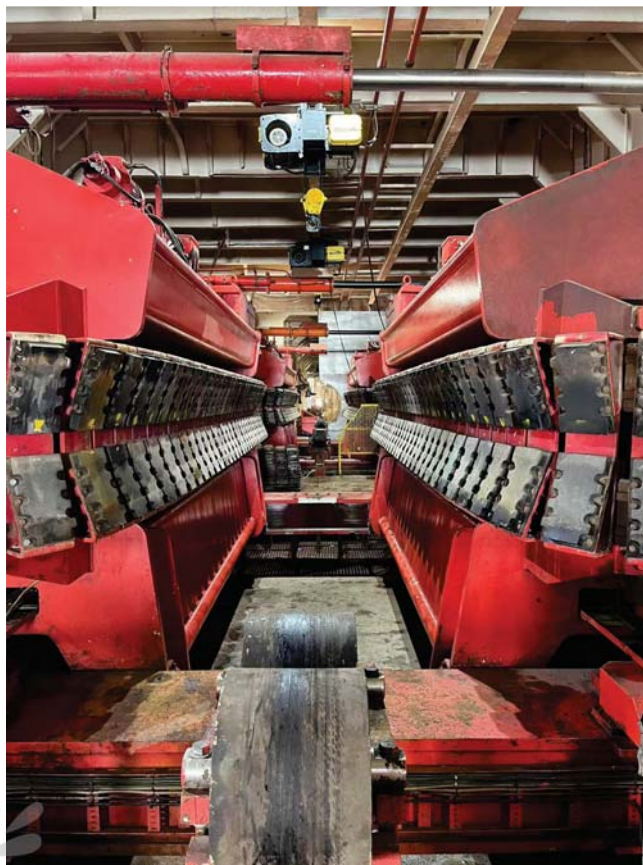




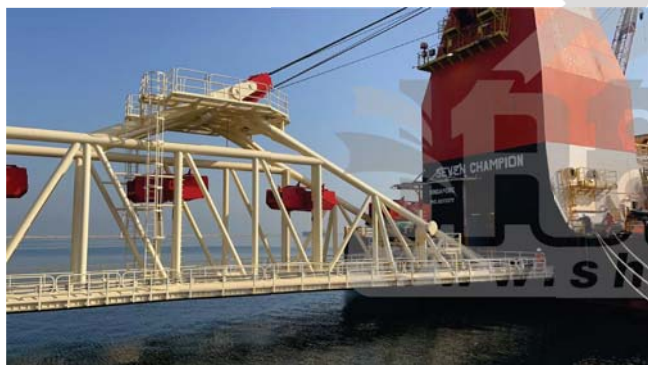
#### 4. Pipe Laying Equipment











## 5. Bridge



www.shipbid.net



## 6. Engine Room and Machinery













## 7. DP Equipment

